

SI Test Report

Customer Name	
Product Model NO.	AMSEE0010001
Model Description	X16-mcio8X 0.75M
Test Condition	Equipment: E5071C Keysight 300kHz-20GHz RF Switch: HFMS-72, Matrix Switch DC - 40GHz, 72CH Summery: Sweep 0.01GHz - 20GHz, Step 10MHz, BWID 50KHz, Rise Time 15Ps Text Fixture: MCIO_2X_0709 Environment: 13.9°C, 47.8%RH
Test Specification	PCIE5.0_85ohm_LX
Test Result	PASS
Test Engineer	LG

Test Item:	Parameter	Specification	Test Result	
1).	SDD21	Insertion Loss	1.50 to 6.70 GHz: -0.6923*[F]-1.561 dB; 6.70 to 14.00 GHz: -0.5205*[F]-2.712 dB; 14.00 to 16.00 GHz: -0.5*[F]-3 dB;	OK
2).	SDD11	Differential mode Return Loss	0.05 to 12.00 GHz: -8 dB; 12.00 to 16.00 GHz: -3dB;	OK
3).	SDD22	Differential mode Return Loss	0.05 to 12.00 GHz: -8 dB; 12.00 to 16.00 GHz: -3 dB;	OK
4).	TDD11	Differential Impedance	1.00 to 1.40 ns: 95 Ohm; 1.40 to 3.00 ns: 93.5 Ohm; 1.00 to 1.40 ns: 75 Ohm; 1.40 to 3.00 ns: 76.5 Ohm;	OK
5).	TDD22	Differential Impedance	1.00 to 1.40 ns: 95 Ohm; 1.40 to 3.00 ns: 93.5 Ohm; 1.00 to 1.40 ns: 75 Ohm; 1.40 to 3.00 ns: 76.5 Ohm;	OK
6).	IntraPairSkew	Skew	20.00 80.00 %: 10 Ps;	OK
7).	SCD21	Differential to common-mode conversion loss	0.05 to 14.00 GHz: -16dB; 14.00 to 16.00 GHz: -15 dB;	OK
8).	SCD11	Differential to common-mode return loss	0.05 to 12.00 GHz: -16 dB; 12.00 to 16.00 GHz: -15 dB;	OK
9).	SCD22	Differential to common-mode return loss	0.05 to 12.00 GHz: -16 dB; 12.00 to 16.00 GHz: -15 dB;	OK
10).	SCC11	Common mode return loss	0.05 to 16.00 GHz: -2 dB;	OK
11).	SCC22	Common mode return loss	0.05 to 16.00 GHz: -2 dB;	OK
12).	NEXT	Near end crosstalk	0.01 to 24.00 GHz: -35 dB;	OK
13).	FEXT	Far end crosstalk	0.01 to 24.00 GHz: -35 dB;	OK
14).	MDNEXT	Multiple Disturber Near end crosstalk	0.05 to 6.70 GHz: -42 dB; 6.70 to 14.00 GHz: -40 dB; 14.00 to 16.00 GHz: -36 dB;	OK
15).	MDFEXT	Multiple Disturber Far end crosstalk	0.05 to 6.70 GHz: -42 dB; 6.70 to 14.00 GHz: -40 dB; 14.00 to 16.00 GHz: -36 dB;	OK

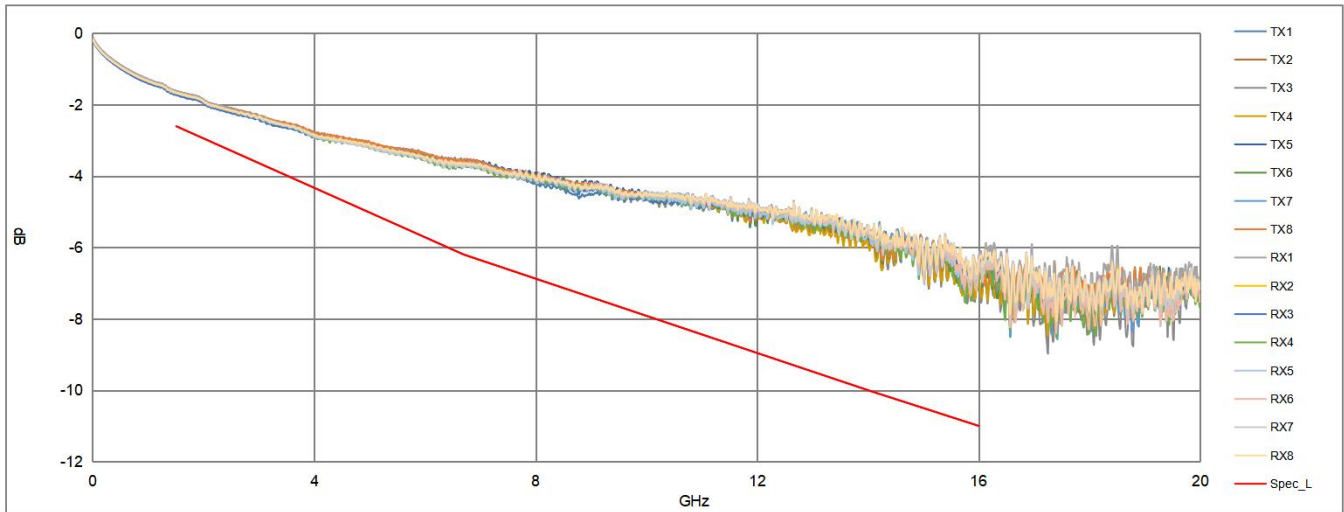
Notes:

Approved By: 颜家帮

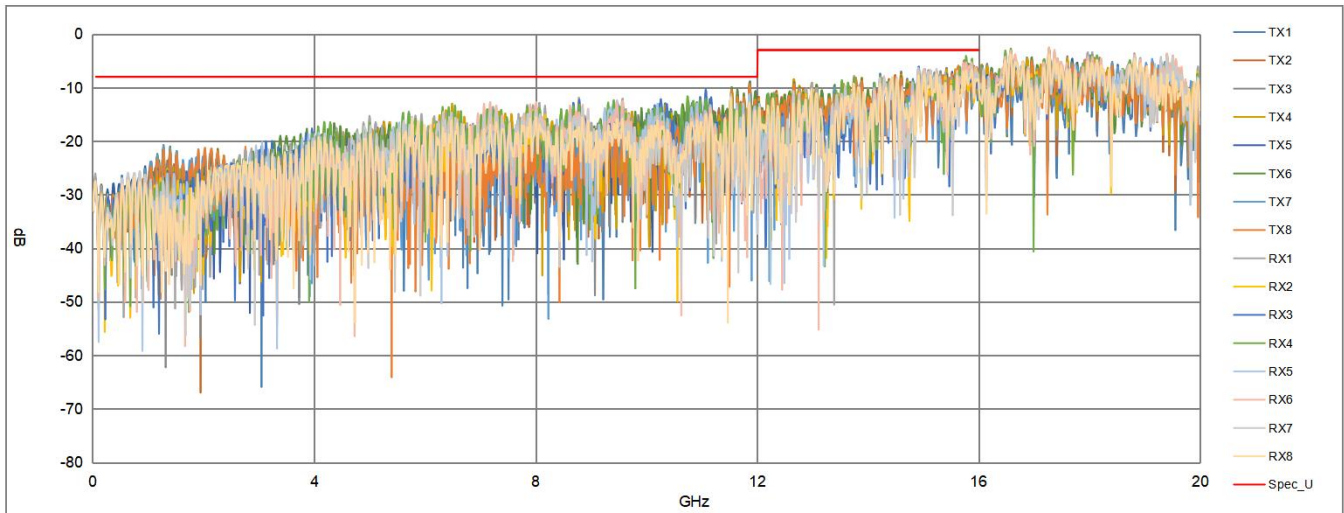
Pair NO.	SDD21 Unit:(dB)													Result
	4G	8G	12G	16G										
TX1	-2.80	-4.22	-5.44	-7.49										OK
TX2	-2.84	-4.08	-5.31	-7.47										OK
TX3	-2.83	-4.15	-5.32	-7.57										OK
TX4	-2.83	-4.10	-5.39	-7.44										OK
TX5	-2.81	-3.98	-5.40	-6.99										OK
TX6	-2.85	-4.07	-5.40	-7.17										OK
TX7	-2.79	-4.12	-5.11	-7.21										OK
TX8	-2.78	-4.05	-5.28	-7.11										OK
RX1	-2.83	-4.10	-4.99	-6.88										OK
RX2	-2.86	-4.10	-5.13	-6.95										OK
RX3	-2.92	-4.17	-5.19	-7.09										OK
RX4	-2.89	-4.14	-5.14	-7.55										OK
RX5	-2.91	-4.14	-5.18	-7.23										OK
RX6	-2.85	-4.09	-5.04	-7.34										OK
RX7	-2.88	-4.12	-4.96	-6.97										OK
RX8	-2.86	-4.08	-5.02	-6.88										OK
Spec	-4.33	-6.88	-8.96	-11.00										N/A
Worst	-2.92	-4.22	-5.44	-7.57										OK

Pair NO.	Mating Area-L		Cable Area-L		Mating Area-R		Cable Area-R		Result
	MAX	MIN	MAX	MIN	MAX	MIN	MAX	MIN	
TX1	88.49	81.45	86.47	85.78	84.62	79.91	86.66	82.32	OK
TX2	89.35	81.27	86.48	85.63	84.49	80.10	87.26	82.63	OK
TX3	89.31	80.58	86.41	85.70	84.37	79.12	87.47	81.29	OK
TX4	90.48	79.94	86.53	85.95	84.38	80.41	87.90	83.06	OK
TX5	90.37	80.76	86.29	85.71	84.90	80.15	87.20	82.34	OK
TX6	89.94	79.03	86.55	85.74	84.63	78.47	87.29	79.44	OK
TX7	89.54	84.58	86.32	85.61	84.70	78.37	86.87	79.99	OK
TX8	88.83	83.86	86.31	85.56	84.58	79.22	86.47	81.18	OK
RX1	86.52	81.79	85.19	84.37	86.17	83.46	89.94	79.50	OK
RX2	87.74	82.35	86.35	85.64	84.00	82.55	88.00	81.74	OK
RX3	90.55	81.79	87.13	86.46	84.00	82.19	88.20	83.27	OK
RX4	89.80	80.14	86.31	85.68	84.10	82.42	88.18	80.48	OK
RX5	89.95	79.86	86.35	85.74	83.60	81.37	87.15	82.21	OK
RX6	89.13	80.74	86.50	85.80	84.01	81.93	87.27	81.52	OK
RX7	88.76	81.40	86.34	85.70	84.24	82.13	88.20	81.60	OK
RX8	88.03	81.38	86.46	85.84	84.24	82.45	87.91	81.90	OK
Spec	95.00	75.00	93.50	76.50	95.00	75.00	93.50	76.50	N/A
Worst	90.55	79.03	87.13	84.37	86.17	78.37	89.94	79.44	OK

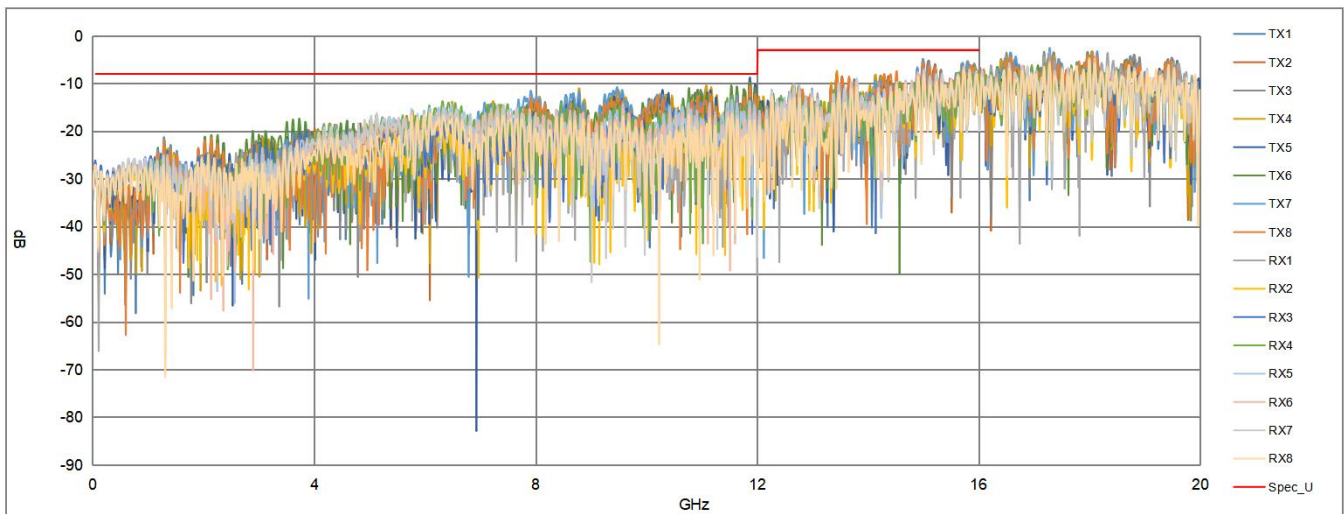
1). SDD21



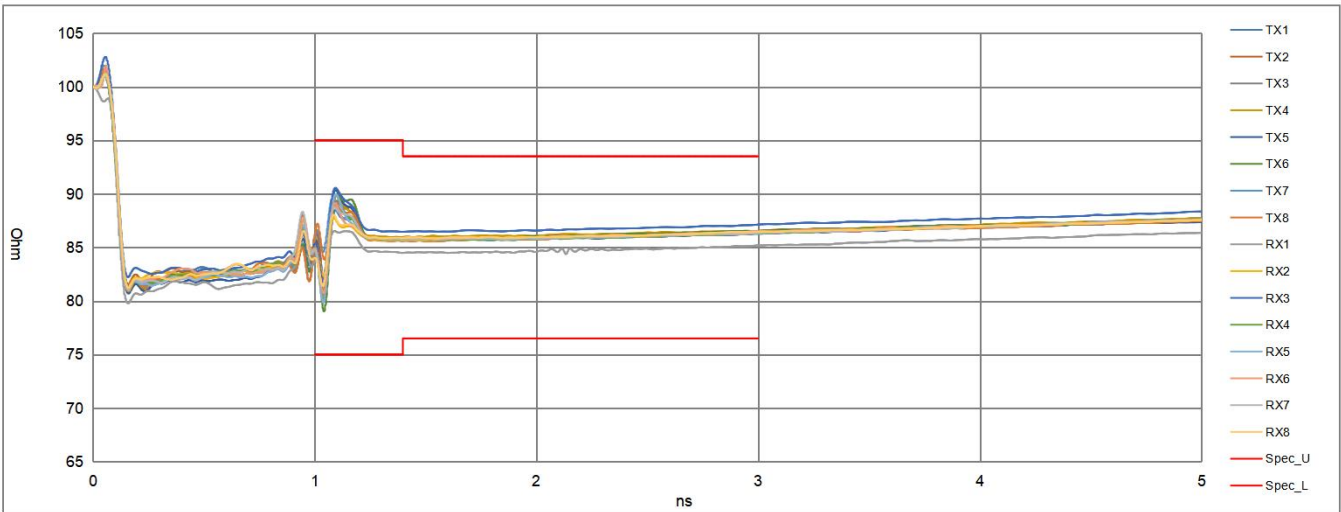
2). SDD11



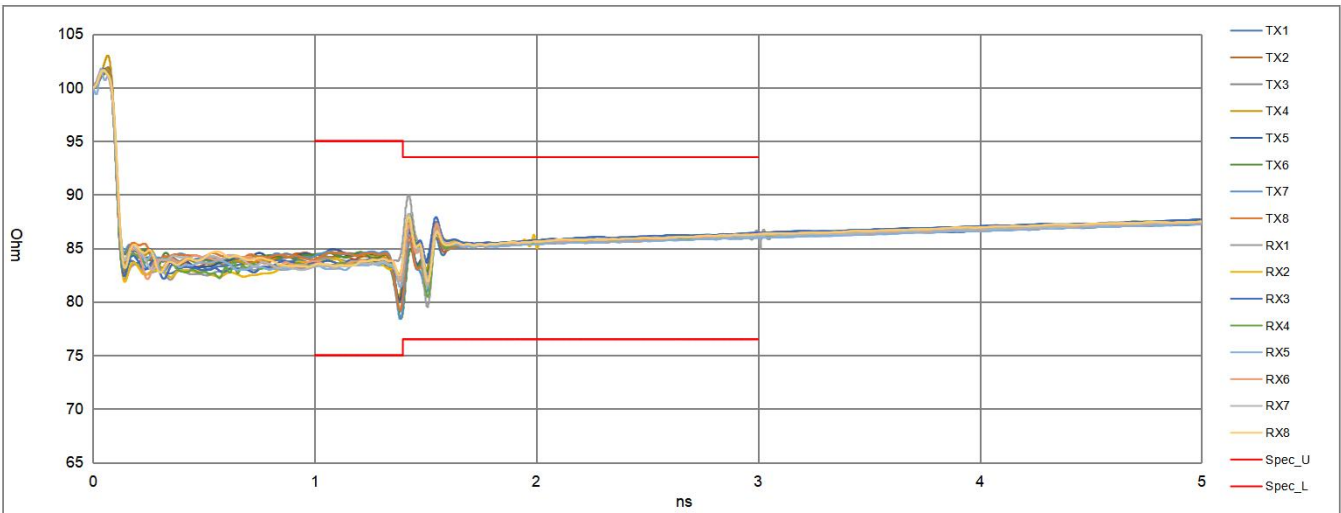
3). SDD22



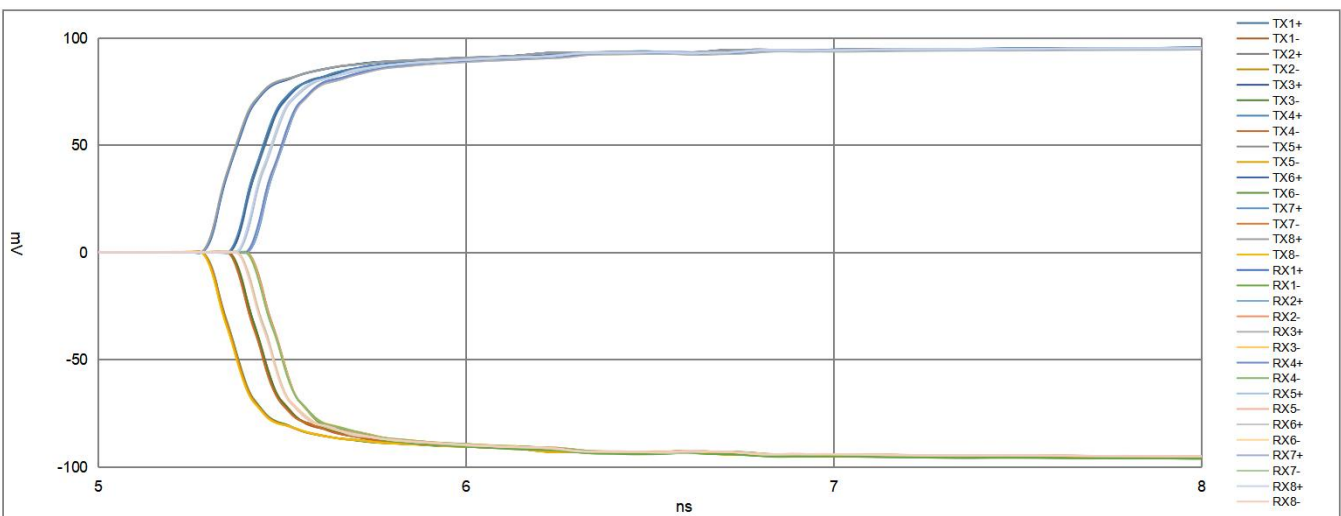
4). TDD11



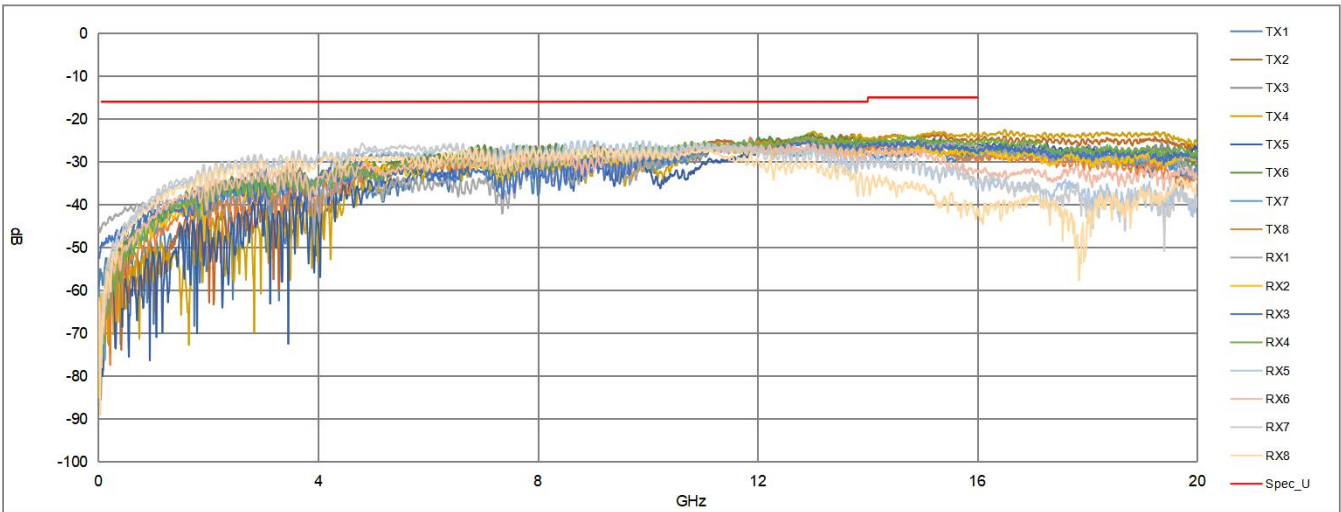
5). TDD22



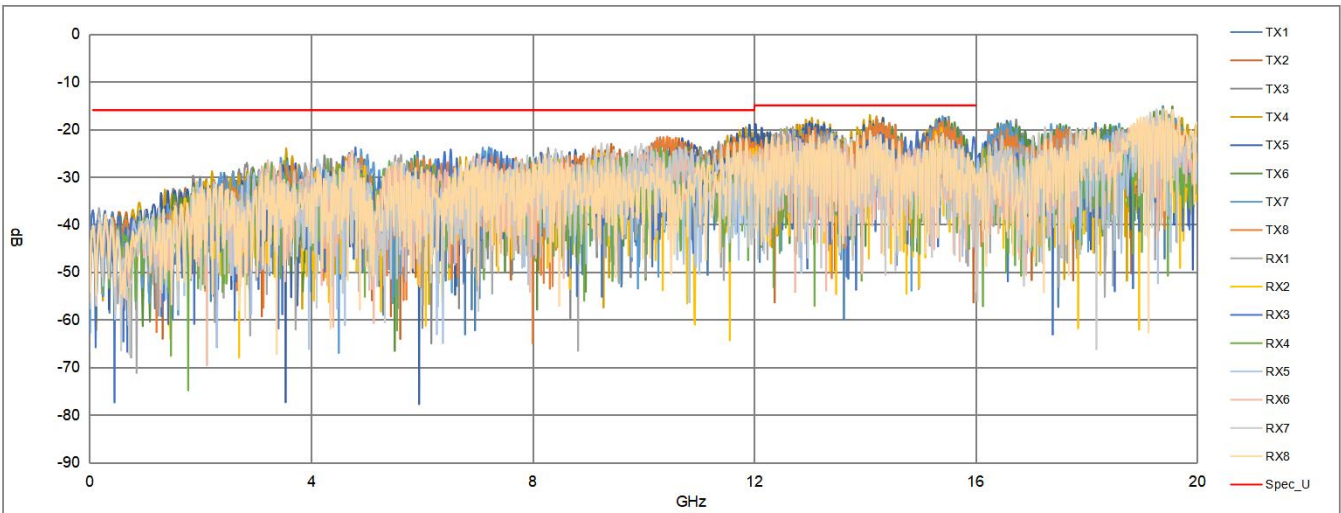
6). IntraPairSkew



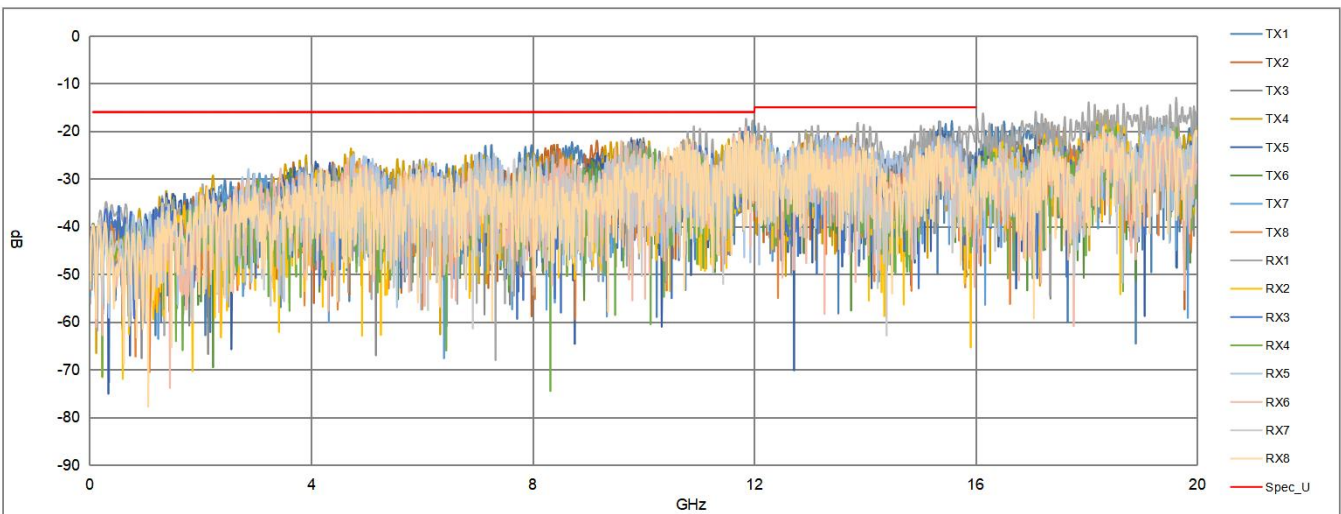
7). SCD21



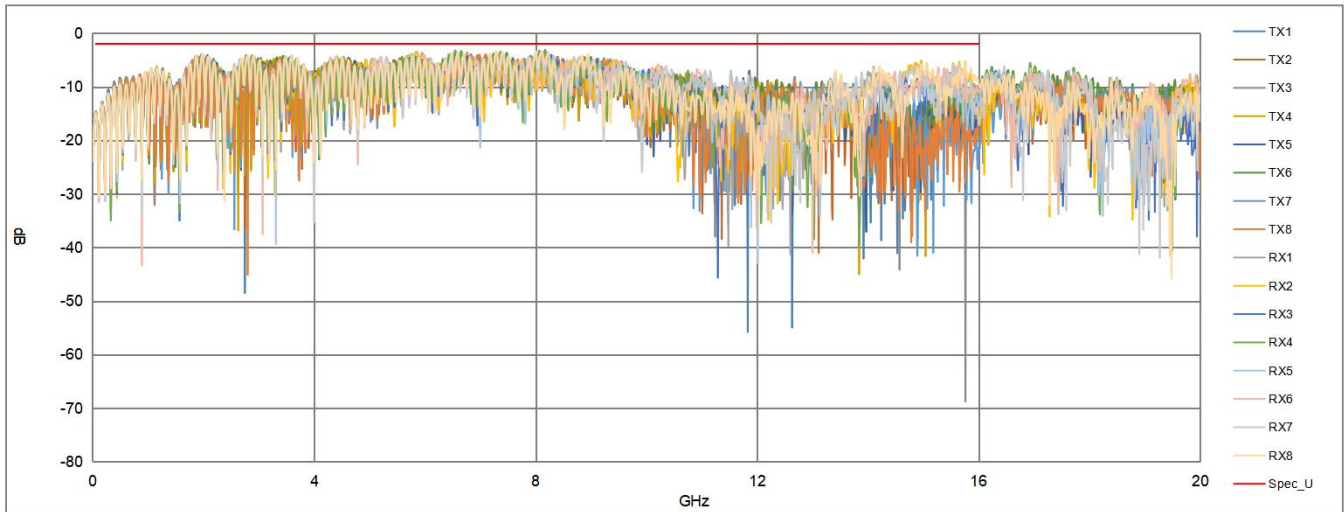
8). SCD11



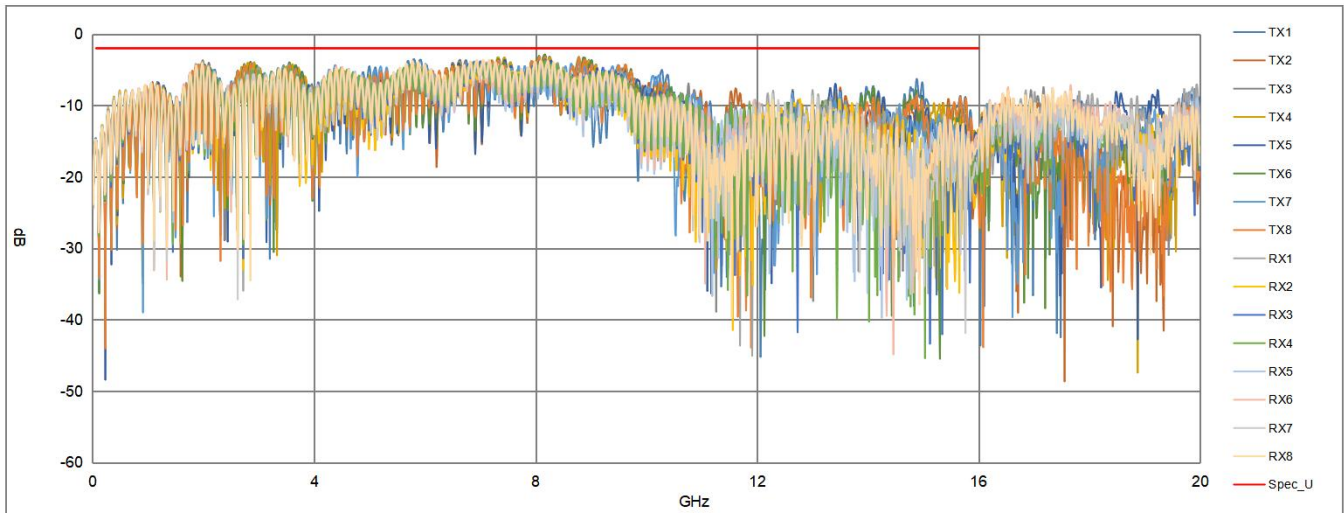
9). SCD22



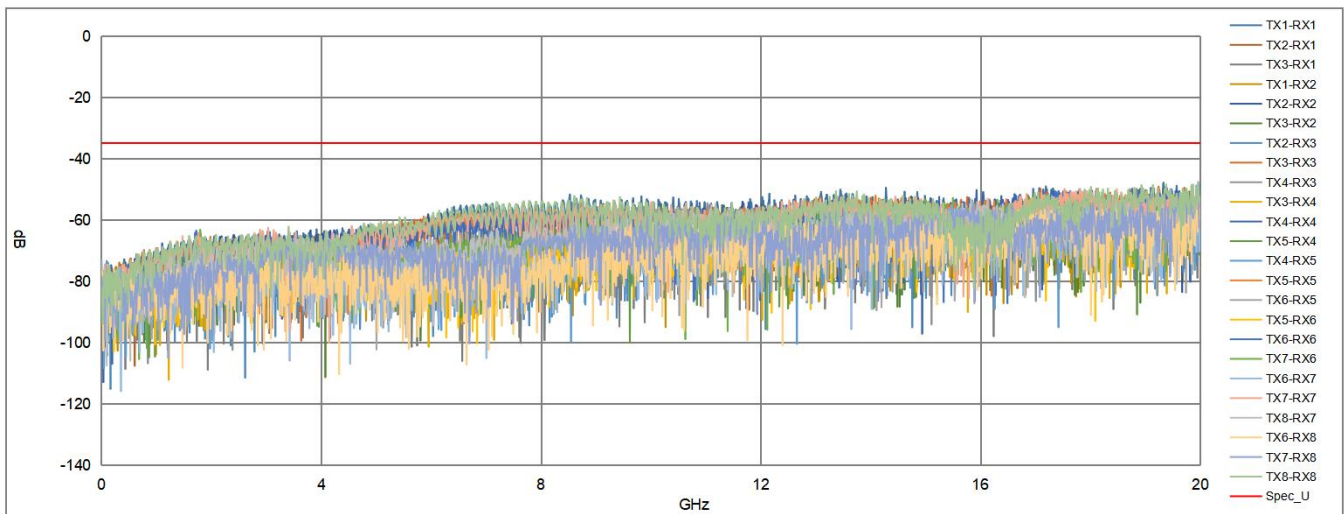
10). SCC11



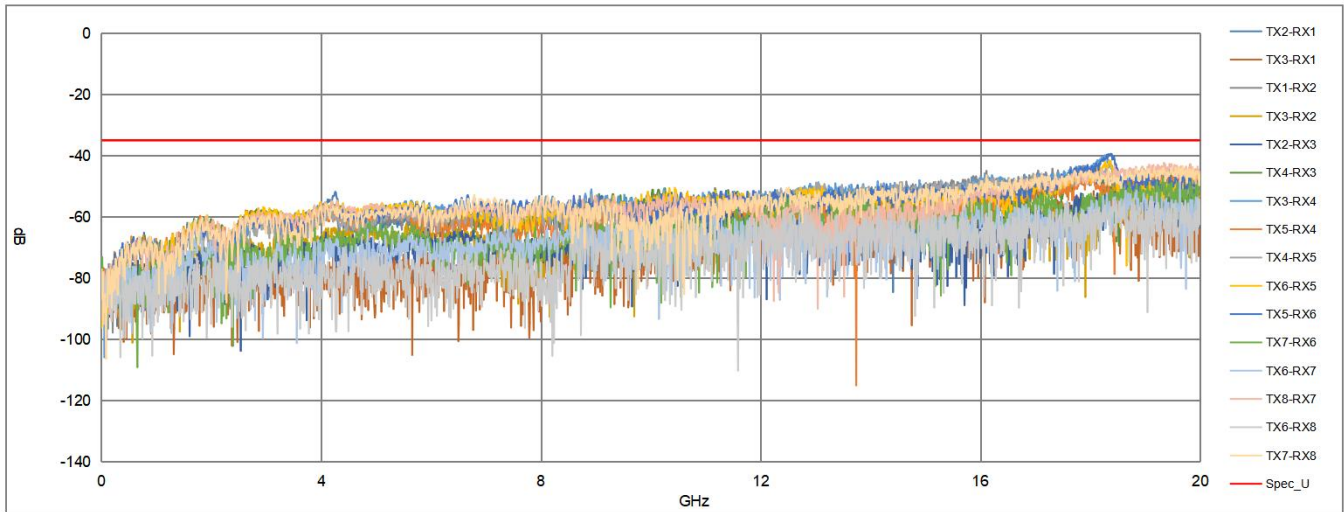
11). SCC22



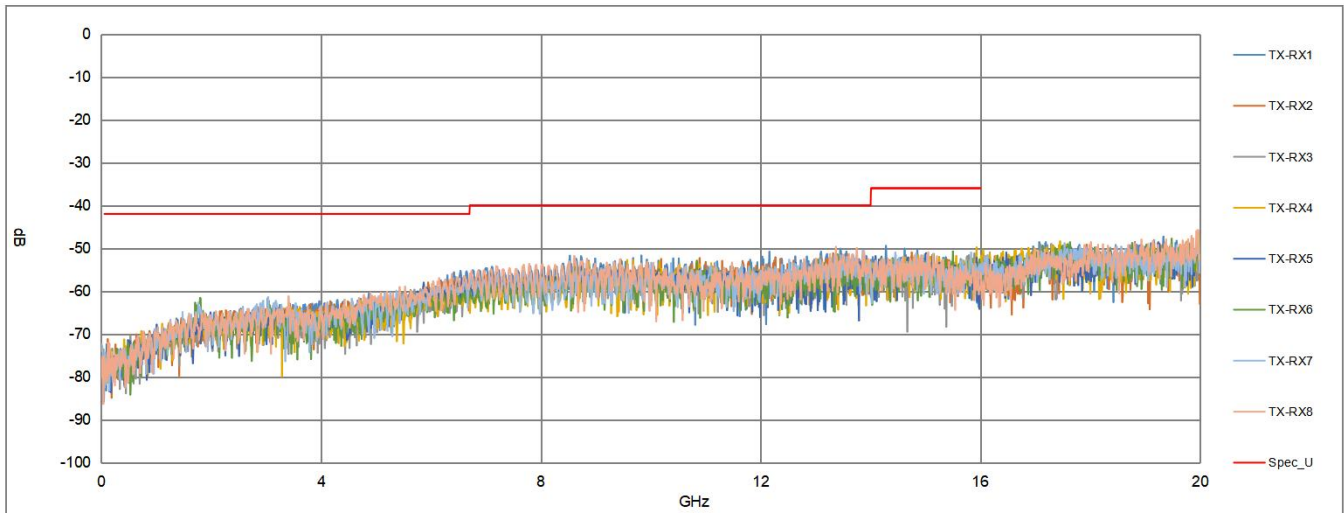
12). NEXT



13). FEXT



14). MDNEXT



15). MDFEXT

